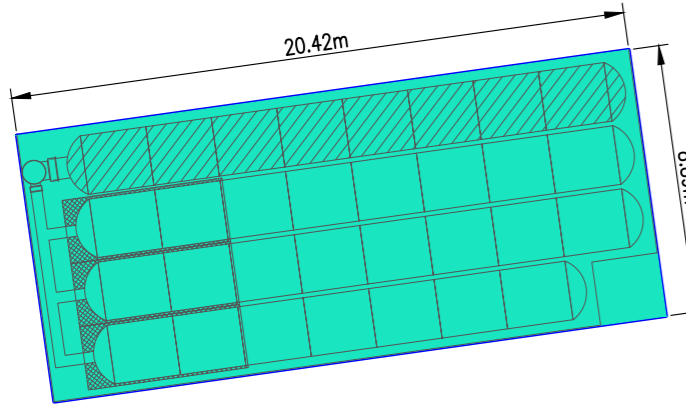


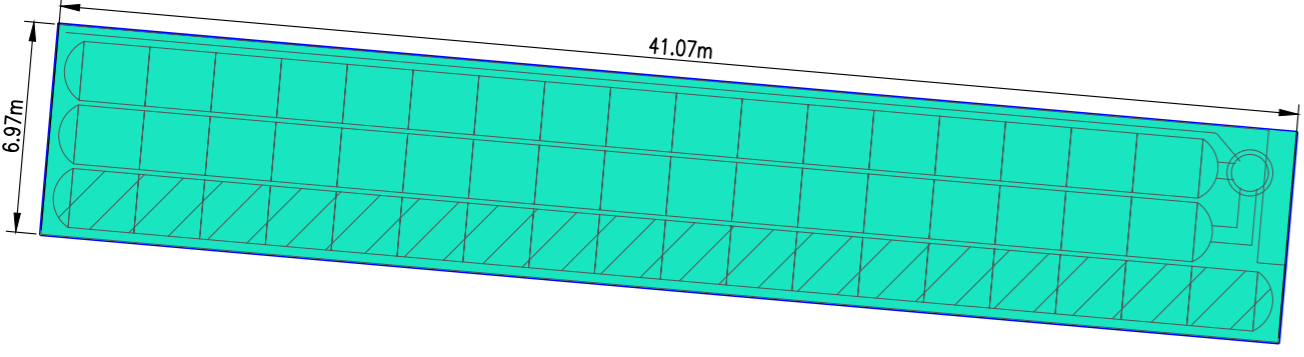
NOTES:

- DO NOT SCALE. USE FIGURED DIMENSIONS ONLY.
- THIS DRAWING IS TO BE READ IN CONJUNCTION WITH ALL OTHER RELEVANT ARCHITECTURAL AND ENGINEERING DRAWINGS.

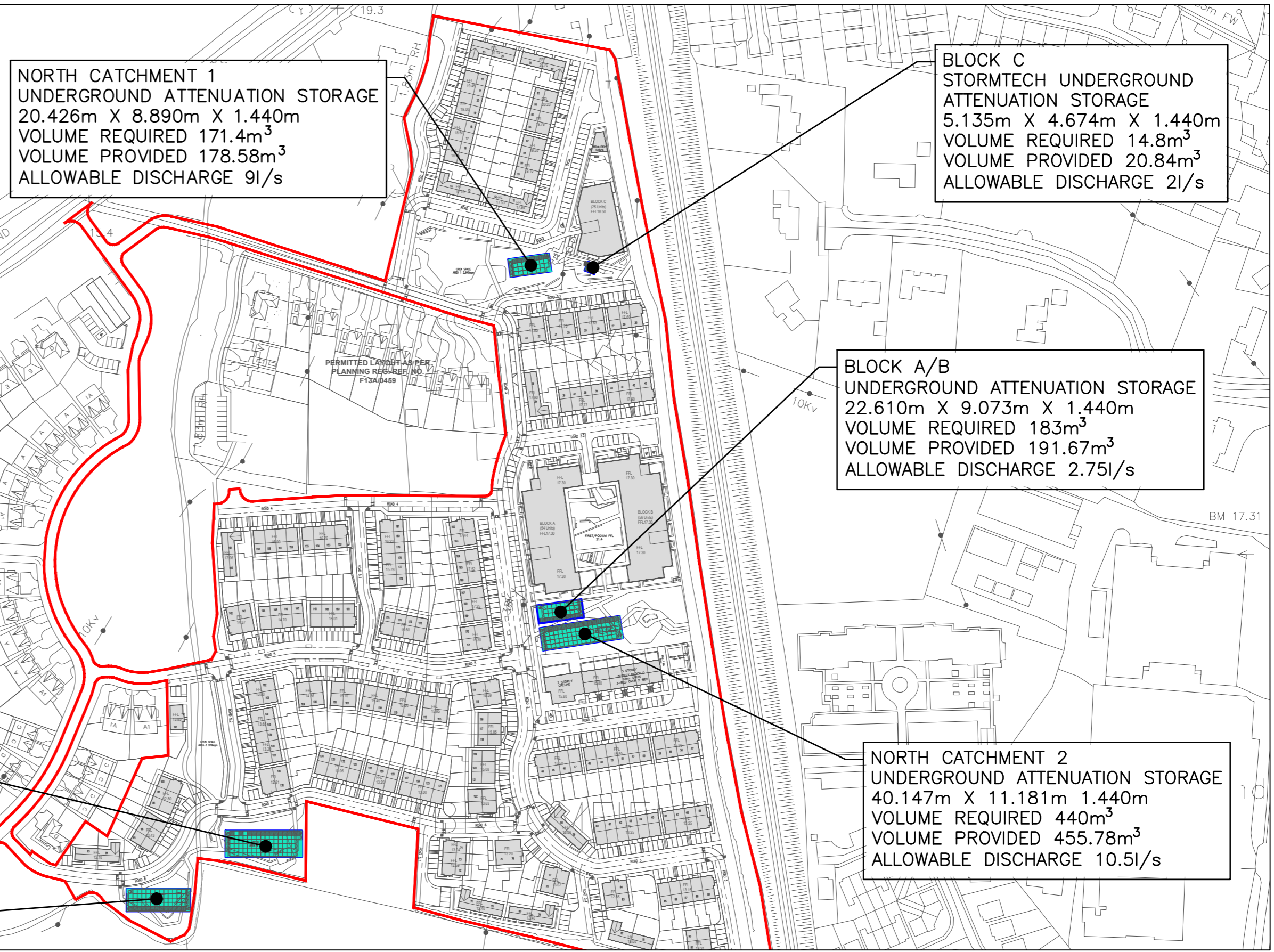


BLOCK C ATTENUATION – PLAN
SCALE 1:250 @ A1

NORTHERN CATCHMENT 1 ATTENUATION – PLAN
SCALE 1:250 @ A1



SOUTH CATCHMENT 2 ATTENUATION – PLAN
SCALE 1:250 @ A1



NORTH CATCHMENT 1 UNDERGROUND ATTENUATION STORAGE
20.426m X 8.890m X 1.440m
VOLUME REQUIRED 171.4m³
VOLUME PROVIDED 178.58m³
ALLOWABLE DISCHARGE 9l/s

BLOCK C STORMTECH UNDERGROUND ATTENUATION STORAGE
5.135m X 4.674m X 1.440m
VOLUME REQUIRED 14.8m³
VOLUME PROVIDED 20.84m³
ALLOWABLE DISCHARGE 2l/s

BLOCK A/B UNDERGROUND ATTENUATION STORAGE
22.610m X 9.073m X 1.440m
VOLUME REQUIRED 183m³
VOLUME PROVIDED 191.67m³
ALLOWABLE DISCHARGE 2.75l/s

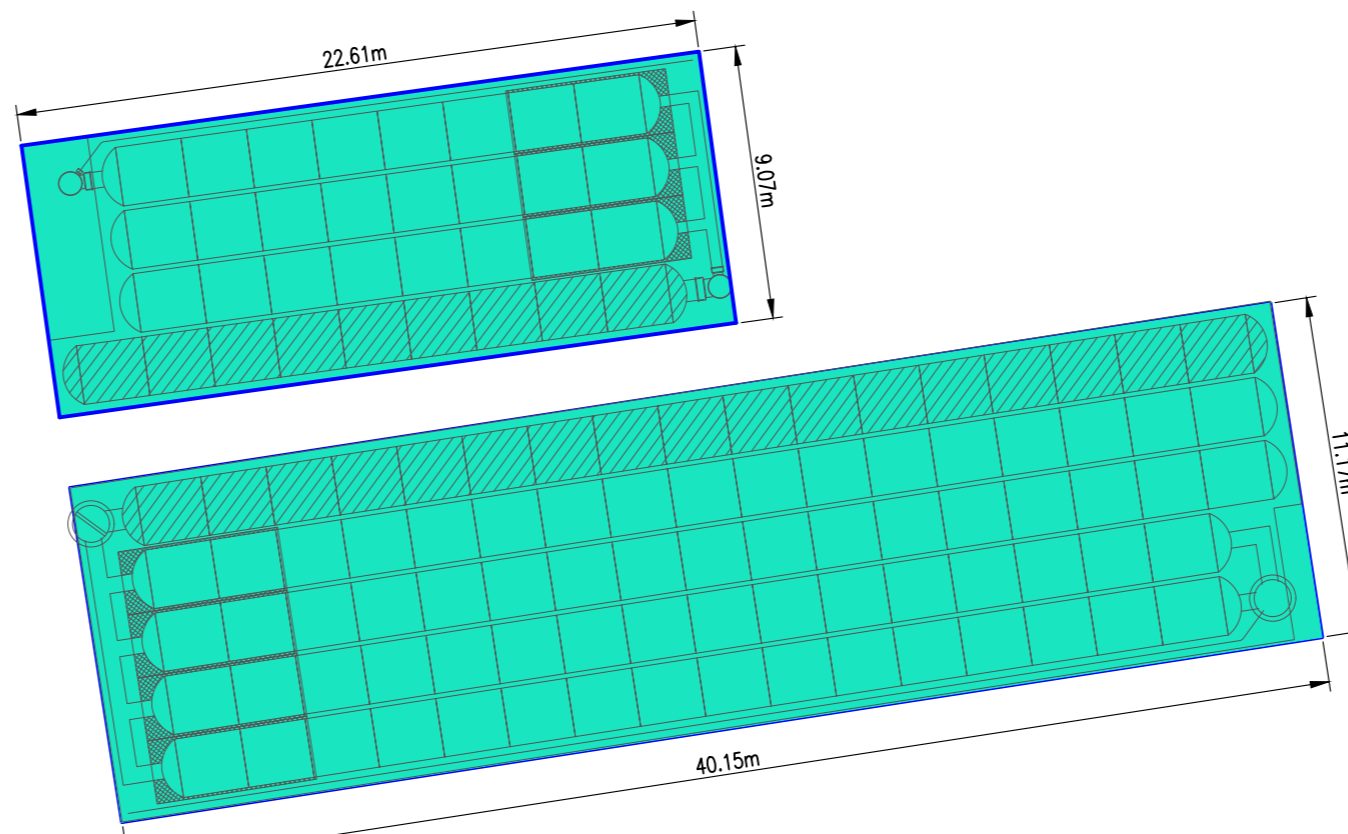
NORTH CATCHMENT 2 UNDERGROUND ATTENUATION STORAGE
40.147m X 11.181m X 1.440m
VOLUME REQUIRED 440m³
VOLUME PROVIDED 455.78m³
ALLOWABLE DISCHARGE 10.5l/s

NORTH CATCHMENT 3 UNDERGROUND ATTENUATION STORAGE
37.963m X 13.106m X 1.440m
VOLUME REQUIRED 483m³
VOLUME PROVIDED 493.66m³
ALLOWABLE DISCHARGE 18.6l/s

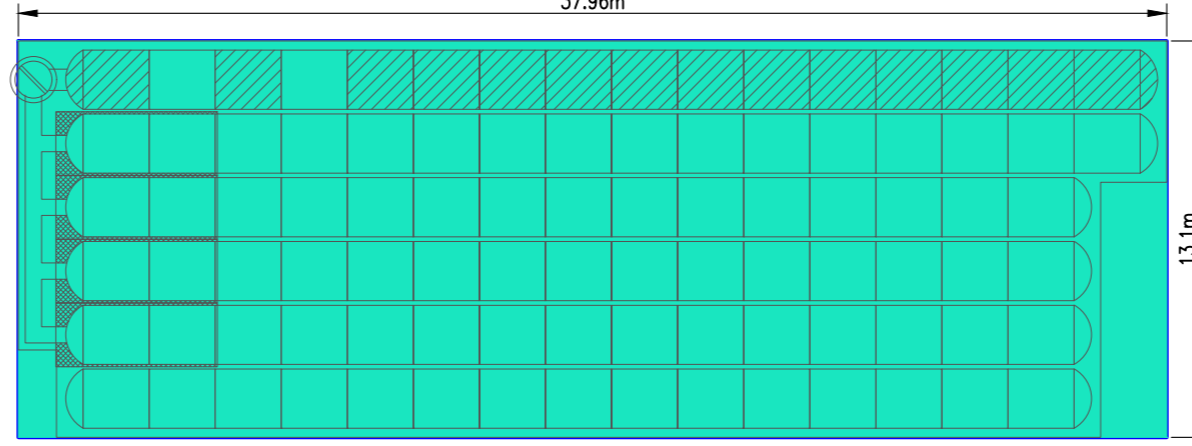
NORTH CATCHMENT 4 UNDERGROUND ATTENUATION STORAGE
31.409m X 11.181m X 1.440m
VOLUME REQUIRED 320m³
VOLUME PROVIDED 344.72m³
ALLOWABLE DISCHARGE 12.8l/s

SOUTH CATCHMENT 1 UNDERGROUND ATTENUATION STORAGE
31.348m X 4.674m X 1.440m
VOLUME REQUIRED 144m³
VOLUME PROVIDED 151.65m³
ALLOWABLE DISCHARGE 6.4l/s

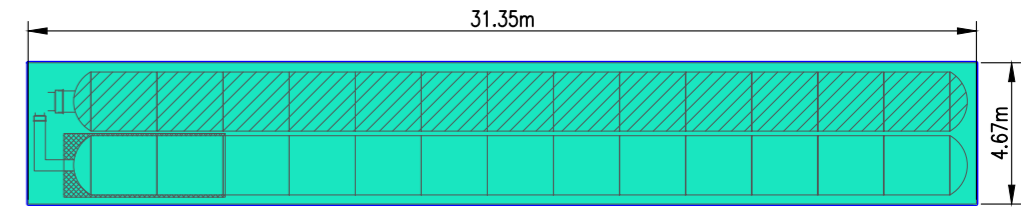
SOUTH CATCHMENT 2 UNDERGROUND ATTENUATION STORAGE
41.072m X 6.965m X 1.440m
VOLUME REQUIRED 281m³
VOLUME PROVIDED 293.58m³
ALLOWABLE DISCHARGE 12.8l/s



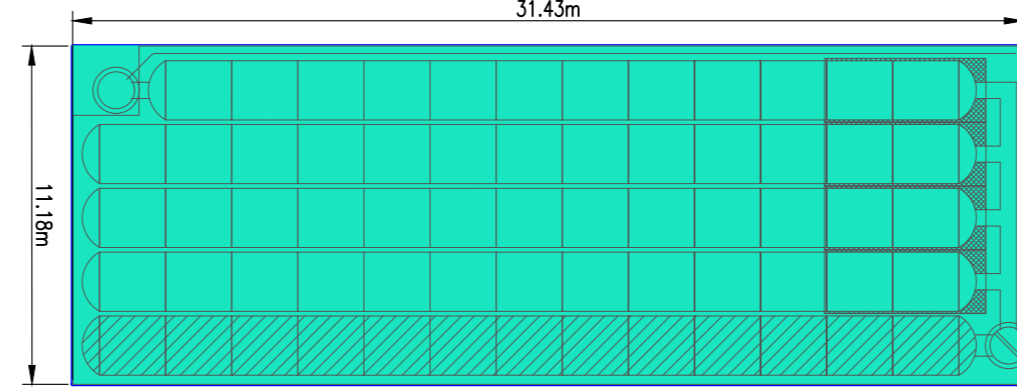
BLOCK A/B AND NORTHERN CATCHMENT 2 TANK – PLAN
SCALE 1:250 @ A1



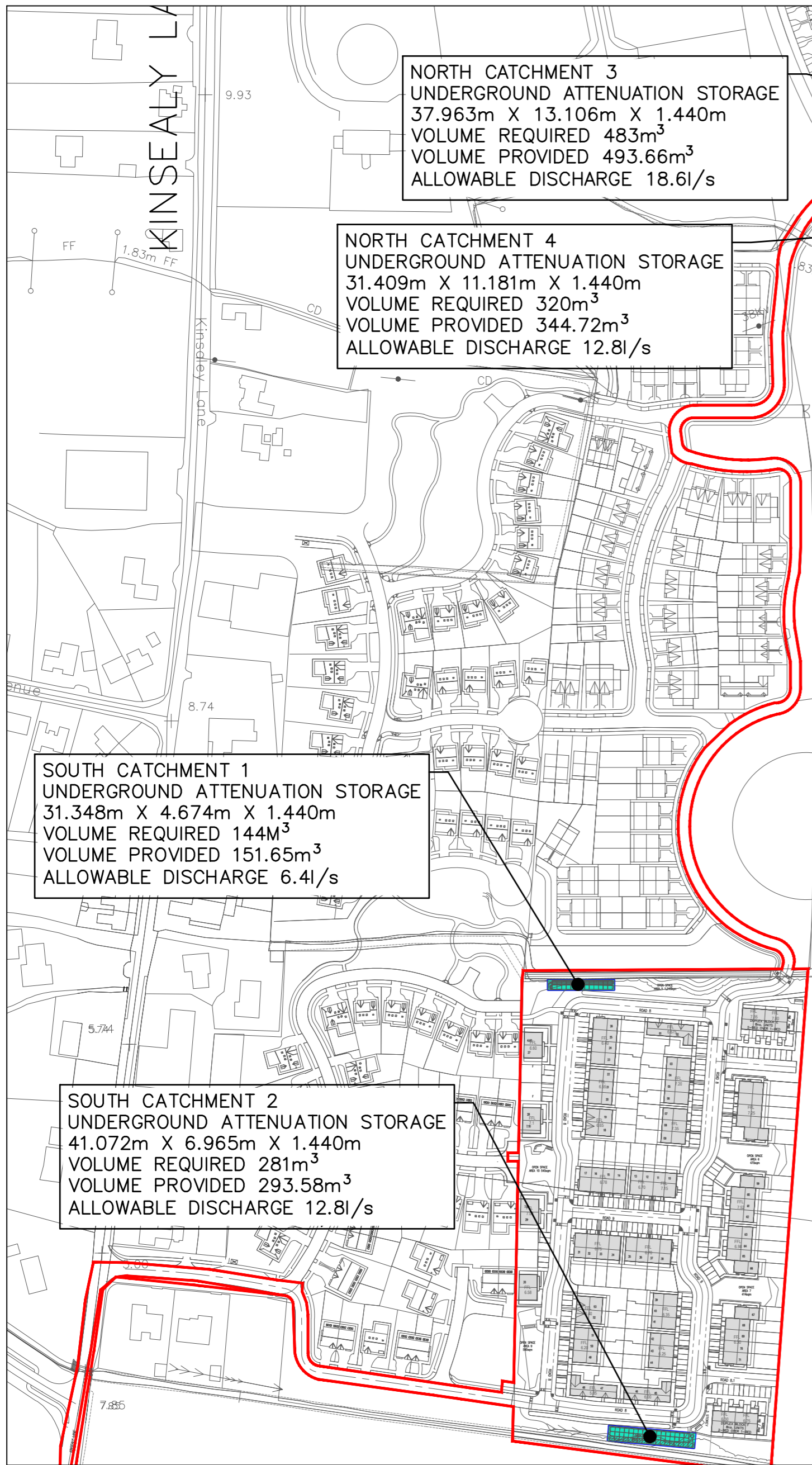
NORTHERN CATCHMENT 3 ATTENUATION – PLAN
SCALE 1:250 @ A1



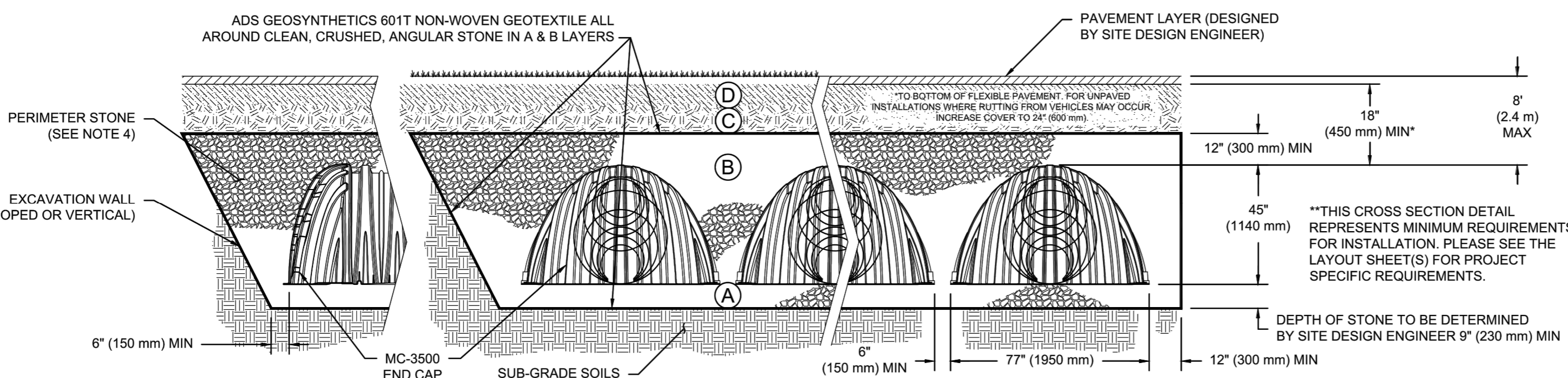
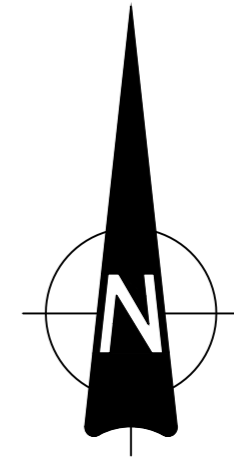
SOUTH CATCHMENT 1 ATTENUATION – PLAN
SCALE 1:250 @ A1



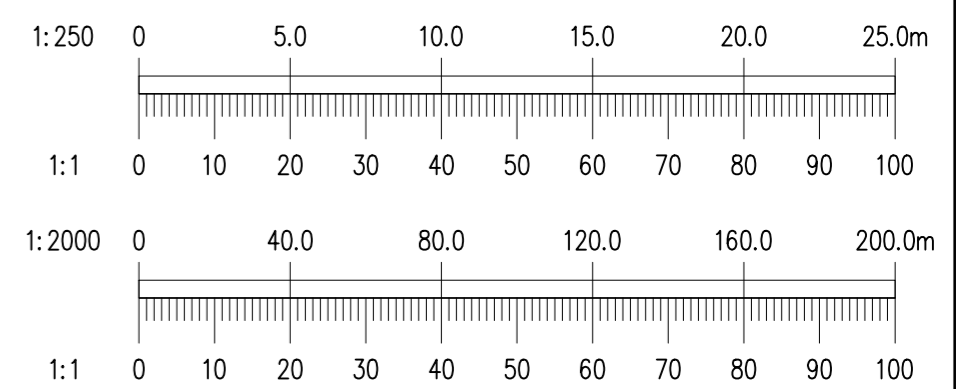
NORTHERN CATCHMENT 4 ATTENUATION – PLAN
SCALE 1:250 @ A1



ATTENUATION LOCATION PLAN
SCALE 1:2000 @ A1



TYPICAL CHAMBER STORMTECH (MC-3500) – CROSS SECTION THROUGH STORMTECH ISOLATOR ROW



Ordnance Survey Ireland Licence No. EN 0006022 © Ordnance Survey Ireland/Government of Ireland.

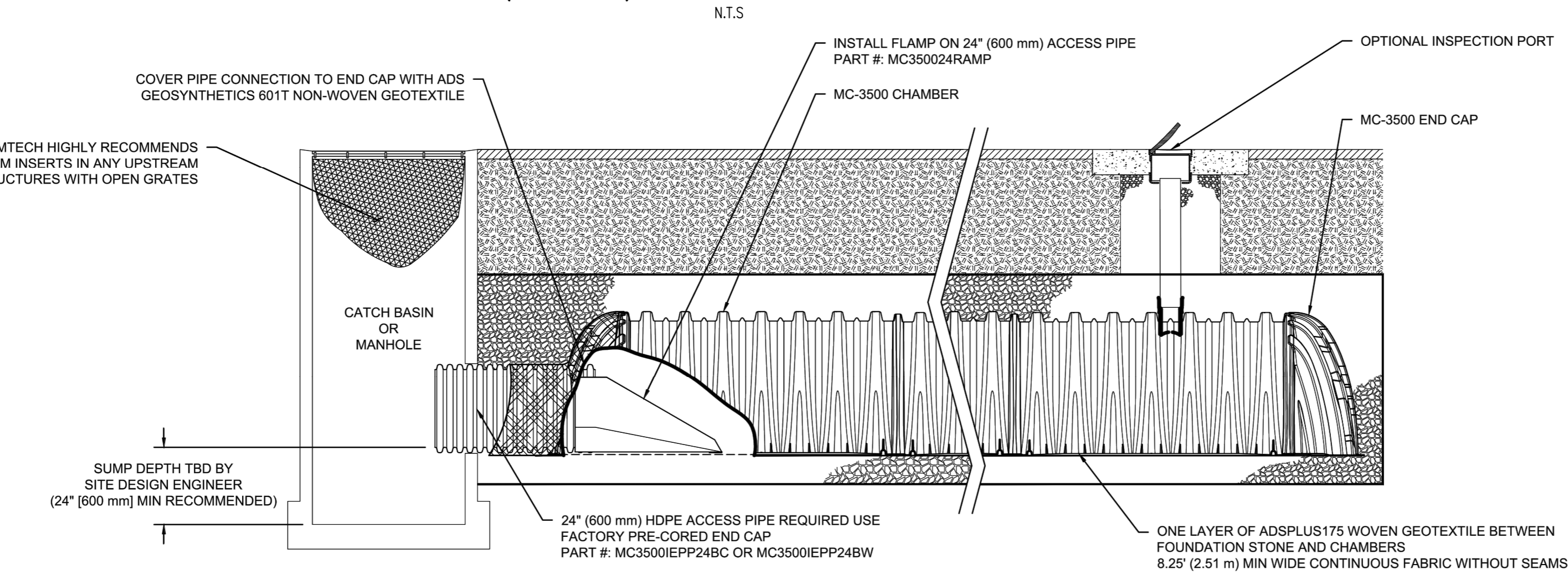
REV.	DATE	AMENDMENT	DRN	APPD

STATUS FOR PLANNING NOT FOR CONSTRUCTION

Waterman Moylan Engineering Consultants
BLOCK 5, EASTPOINT BUSINESS PARK, ALFIE BYRNE ROAD, DUBLIN D03 H3F4 IRELAND.
Tel: (01) 664 8900 Fax: (01) 661 3618
Email: info@waterman-moylan.ie www.waterman-moylan.ie

CLIENT: **BIRCHWELL DEVELOPMENTS LTD**
ARCHITECT: **MCCROSSAN O'ROURKE MANNING ARCHITECTS**
PROJECT: **BROOMFIELD SHD**
TITLE: **STORMTECH ATTENUATION DETAILS**

DRAWN	DESIGNED	APPROVED	DATE
PJD	MD	MD	MAR 2022
SCALE	JOB NO.	DRG. NO.	REVISION
AS SHOWN @ A1	18-091	P230	



TYPICAL CHAMBER DETAIL (MC-7200) – LONG SECTION THROUGH STORMTECH ISOLATOR ROW